



CAPRI® PLUS

Instruction Manual

28' x 38'

Including sidewall and connector instructions

Eureka!

www.eurekapartytents.com

TECHNICAL INSTRUCTION MANUAL: CAPRI® PLUS CANOPIES

STOP

Prior to installing any tent, always make sure you check for overhead and underground obstructions!

For safe assembly, we recommend:

- Steel Toe Safety Shoes
- Hard Hats/Helmets
- Safety Gloves
- Utility Aprons
- Step Ladders
- Drop Cloths
- Cleaning Supplies
- Sledge Hammer

ALWAYS READ THE TECHNICAL INSTRUCTION MANUAL COMPLETELY BEFORE BEGINNING THE INSTALLATION. IF YOU HAVE ANY QUESTIONS, PLEASE CONTACT YOUR SALES REPRESENTATIVE OR THE MANUFACTURER BEFORE YOU BEGIN.

CAUTION

Whether you are planning to do it yourself or hire a professional tent installation company, always know what's underground. Call 811 prior to installing your tent and make sure your underground utility lines are marked. It's FREE and helps prevent accidents and/or injury.



**Know what's below.
Call before you dig.**

CAUTION

Whenever you install a tent with hardware at - or above - the shoulders, always wear a hard hat.

CAUTION

Proper staking is required on all tents. Soil conditions can vary from site to site and within a set up site. Additional stakes may be required in soft soil conditions or whenever stakes pull up from the ground. Capri Plus Canopies are NOT engineered or wind-rated.

Eureka!

TECHNICAL INSTRUCTION MANUAL: CAPRI® PLUS CANOPIES

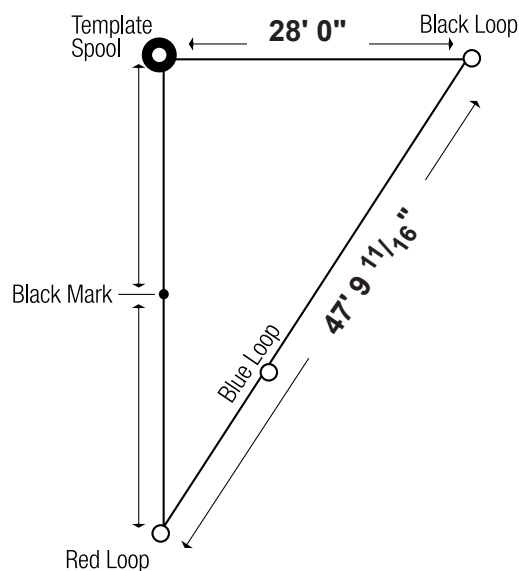
Assembly (28'x38' Shown)

1. Inspect the site and make sure the area is level, free of underground utilities and any overhead obstructions. Unload poles and tent bundles.

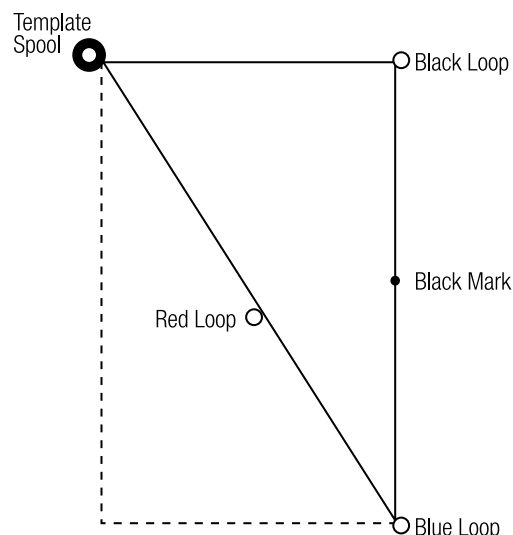


2. Square the baseplates. Place the layout spool in one corner and drive a small, plastic marking stake through the spool and into the ground.

3. Unwind the line from the spool to create the staking template. Connect the loop at the end of the line to the staked spool. Pull the RED and BLACK loops away from the spool to form a right triangle. Drive a small, plastic marking stake through the RED and BLACK loops, and at the BLACK MARK (side pole position).



4. Remove the RED loop from the plastic marking stake. Pull the BLUE loop to the last open corner until a new right triangle is formed. Drive a small, plastic marking stake through the BLUE loop and at the BLACK MARK.



Eureka!

TECHNICAL INSTRUCTION MANUAL: CAPRI® PLUS CANOPIES

5. Remove the small, plastic marking stake from the ground and line up this position with the center of the slot in the stakeplate. The mark from the template should line up with the slot where the ratchet will be inserted.

NOTE: To help locate the position, mark the spot with marking spray or chalk.

6. Place the stakeplates and ratchets in the correct positions. Refer to the stakeplate diagram at the back of the manual for proper placement and alignment of the stakeplates and ratchets. NOTE: placement of the plate and ratchet is different for the side pole positions.

Insert the lip of the ratchet through the correct slot on the stakeplate, so the stake holes line up. See photos for ratchet placement on corners and side pole positions.

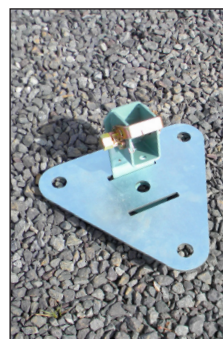
7. Stake through the baseplate and ratchet, then stake through the additional three stake holes. Additional stakes and/or stakebars may be necessary in soft soil conditions or whenever stakes pull up from the ground.

NOTE: If you are connecting two tents together, you will need to overlap the stakeplates...refer to the CONNECTOR section of the manual.

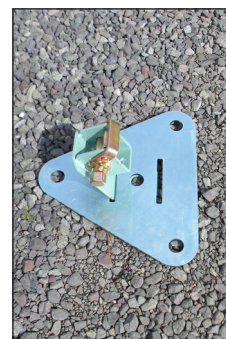
8. Spread a ground cloth over the area defined by the stake plates. Unroll the tent canopy, with top side up, from the center of the covered area.



CORNERS



SIDE POLES



TECHNICAL INSTRUCTION MANUAL: CAPRI® PLUS CANOPIES

9. Attached the web from the corners of the tent to their respective ratchet on the stakeplate. Then, attach the web from the side pole positions to their respective ratchets on the stakeplate.



10. Assemble the (6) side poles. Each side pole is 2 pieces, with a top pin section and bottom section with angled base.

Starting at the corners, lift the canopy, and from the underside, insert the side pole tip into each corner ring.



11. Raise the poles with a slight bottom angle toward the center of the tent. Push the poles out until the canopy is taut. After the corners, insert the side poles in the same fashion.

NOTE: Corner and side poles have an angled baseplate attached at the bottom. Center poles will have a horizontal baseplate attached.



12. Assemble the (2) center poles. Each center pole is 2 pieces, with a top pin section and bottom section with horizontal base. Insert a pole tip into the ring at the canopy peak. Raise the center pole to vertical. Repeat with the second center pole. Tie the center pole jump ropes.



TECHNICAL INSTRUCTION MANUAL: CAPRI® PLUS CANOPIES

13. After all poles are in position, go around the outside of the tent and tighten the ratchets, starting with the corners, then moving to the side pole positions.



14. **Attach sidewalls.** First, loosen the sidewall rope along the opening of the arch. Starting at the center/top of the zipper on the sidewall, snap the plastic hook onto the sidewall rope in the top center of the arch. Continue snapping the plastic hooks down each side of the sidewall.



15. After all snaps are attached to the sidewall rope, pull the rope taut and tie it off into a knot on the bottom.

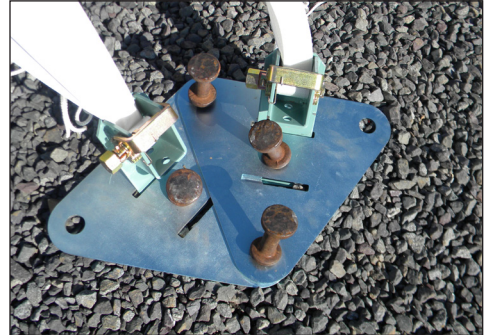


16. Hook the gold hook through the ring on the bottom of the tent (see photo).



TECHNICAL INSTRUCTION MANUAL: CAPRI® PLUS CANOPIES

17. **Connecting tents.** To connect tents together, you will overlap the stakeplate along the side where the tents connect and drive a stake through BOTH plates (see photo). Once all stakeplates are staked, assemble both tents according to the above mentioned instructions.



18. To attached connectors between the tents, loosen the sidewall rope on one arch in both tents. Starting at the center of the arch and center of the connector, attach the plastic snaps to the center of the archway and continue down both sides. When you get the to end, pull the sidewall rope taut and tie it off on the bottom corner.



19. Attach the gold hook at the bottom of the connector to the ring and pull the webbing tight to tension the connector in place.

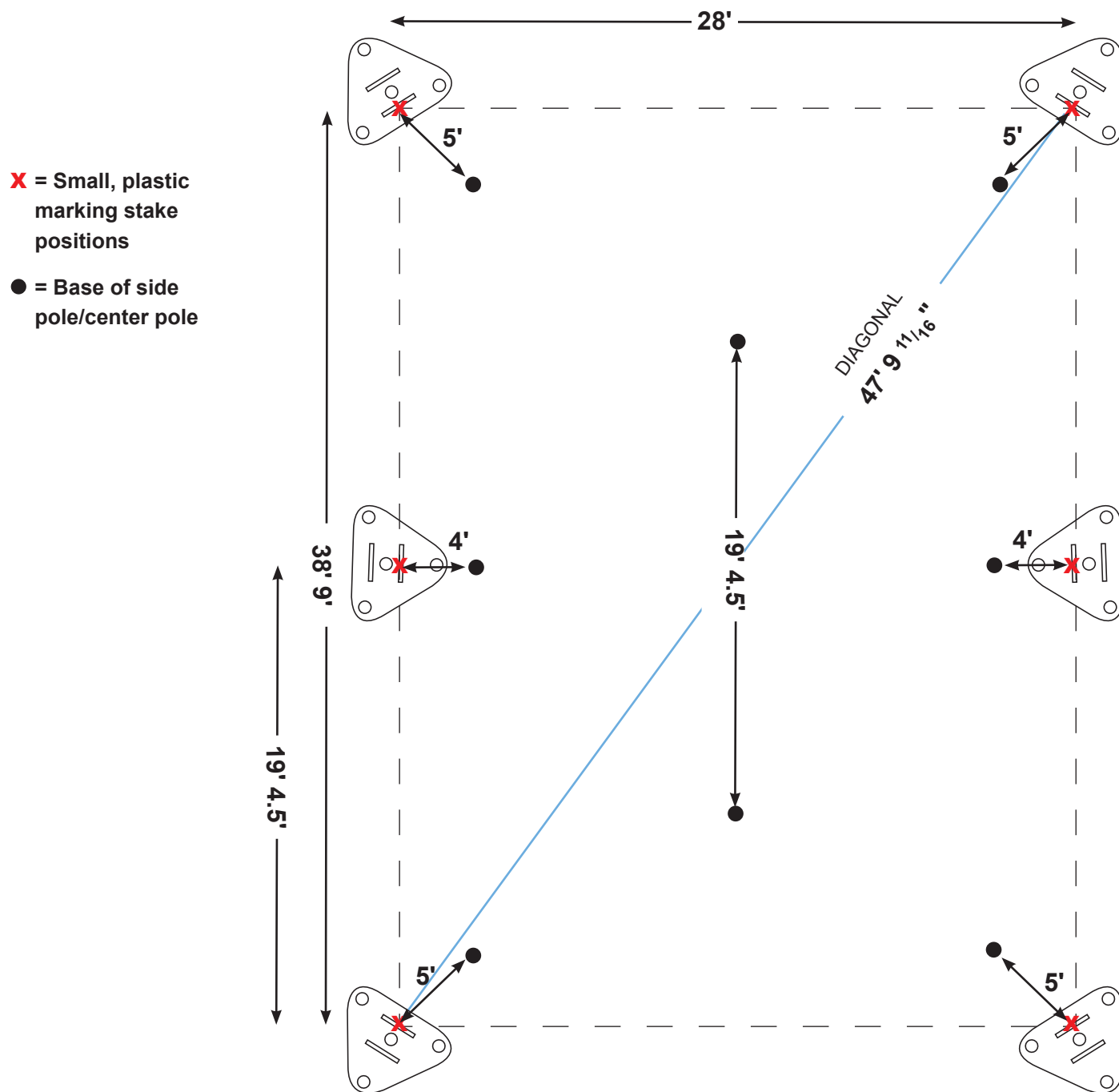


20. Installation is complete. To take down the canopy, following the instructions in reverse.



Eureka!

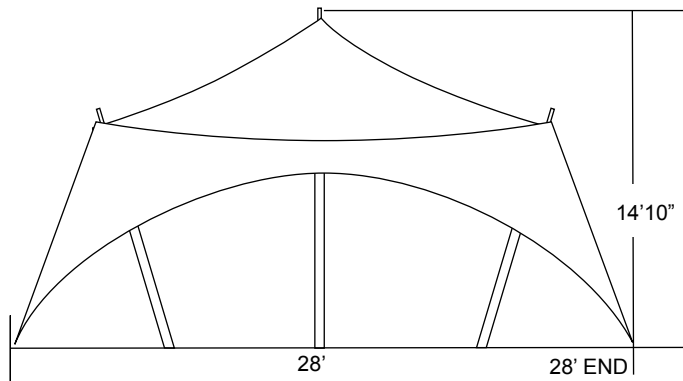
28'x38' Stakeplate/Pole Position Diagram



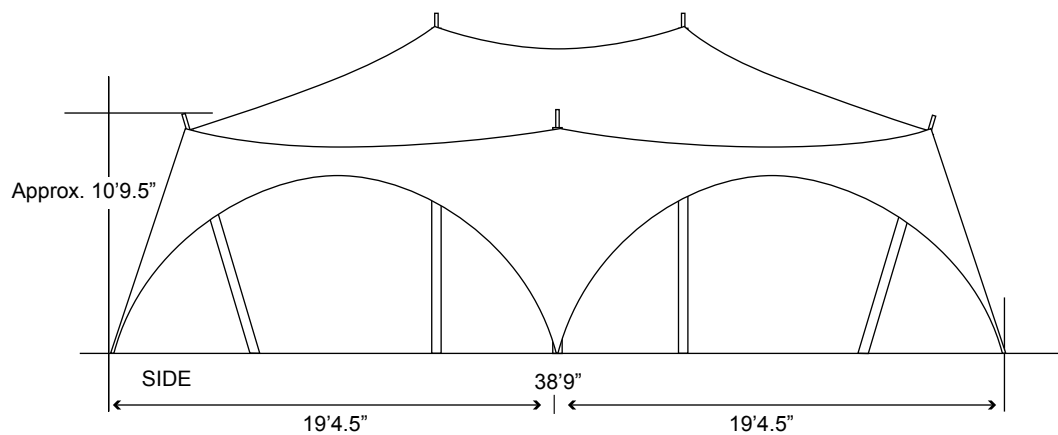
Eureka!

TECHNICAL INSTRUCTION MANUAL: CAPRI® PLUS CANOPIES

28'x38' Specifications



28' Wide End View (Width of the tent)



38' Side View (Length of the tent)

